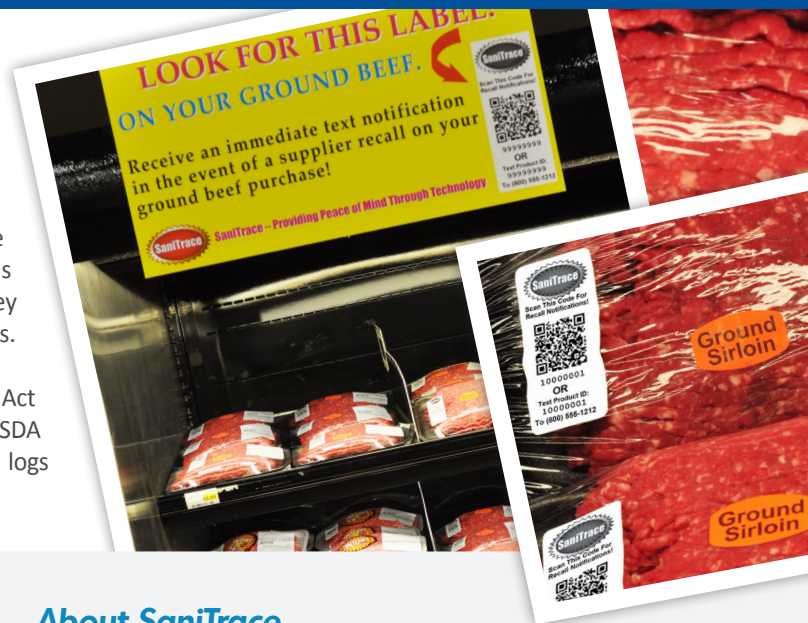


Ground Beef Logging Labeling Solutions

brother
at your side

SaniTrace software combined with Brother's QL-710W has created the premiere ground beef logging and labeling solution for the meat handling industry. SaniTrace enables centrally managing the logging of all ground beef as well as tracking the daily sanitation of meat grinding equipment. The SaniTrace/Brother solution creates a barcode label that traces ground beef from origin to consumer and enables the shopper to receive a notification via text message if their ground beef is under recall. SaniTrace provides customers with peace of mind that they will be notified when a recall is announced on all beef and pork purchases.

Did you Know? The repeal of the Country of Origin Labeling Act created a traceability issue for beef and pork within the industry. A new USDA law now mandates all ground beef components must be logged with all logs stored for two years.



Compliance

- ◆ New Federal laws are mandating food safety practices where non-compliance is a Federal violation. Incomplete or lost paper logs are violations of the new record keeping law that applies to retail stores that grind raw beef products.

Traceability

- ◆ This is the most important food safety issue. How to answer safety questions from consumers or inspectors? Storing this information centrally as well as being able to track and report on it helps ensure safety and regulatory compliance, while also ensuring customer piece of mind.

Accuracy

- ◆ By implementing centralized system takes all manual processes and risk out of your meat handling process. This eliminates mistakes as well as enabling accountability down to the employee level.

Cost Effective

- ◆ Some solutions can cost thousands of dollars per location. The SaniTrace bundle includes a tablet, barcode scanner and Brother QL-710w creating a very cost-effective and affordable startup solution.

Speed

- ◆ The Brother QL-710w prints up to 93 labels per minute*, eliminating the need for time-consuming handwritten entries.

About SaniTrace

SaniTrace based in Creve Coeur, MO offers a cloud-based software platform with modules for Hospital Cleaning, Retail Store Cleaning and Safety Labeling. These solutions are used by all tiers of hospitals, grocery stores, convenience stores, hotels, restaurants, and ground beef operations.

About the Brother QL-710w

The compact Brother QL-710w fits in practically any workspace and has built-in wireless and Ethernet connectivity. It prints inexpensive, easy-to-peel pre-sized labels. Changing supplies takes seconds and the printer automatically senses the labels selected. The QL-710w uses reliable thermal printing so there are no inks, toners or ribbons to purchase.



For more information call 866.455.7713

www.brother.com | ©2016 Brother International Corporation



* Based on using standard address labels, text only, at 300 x 300 dpi.